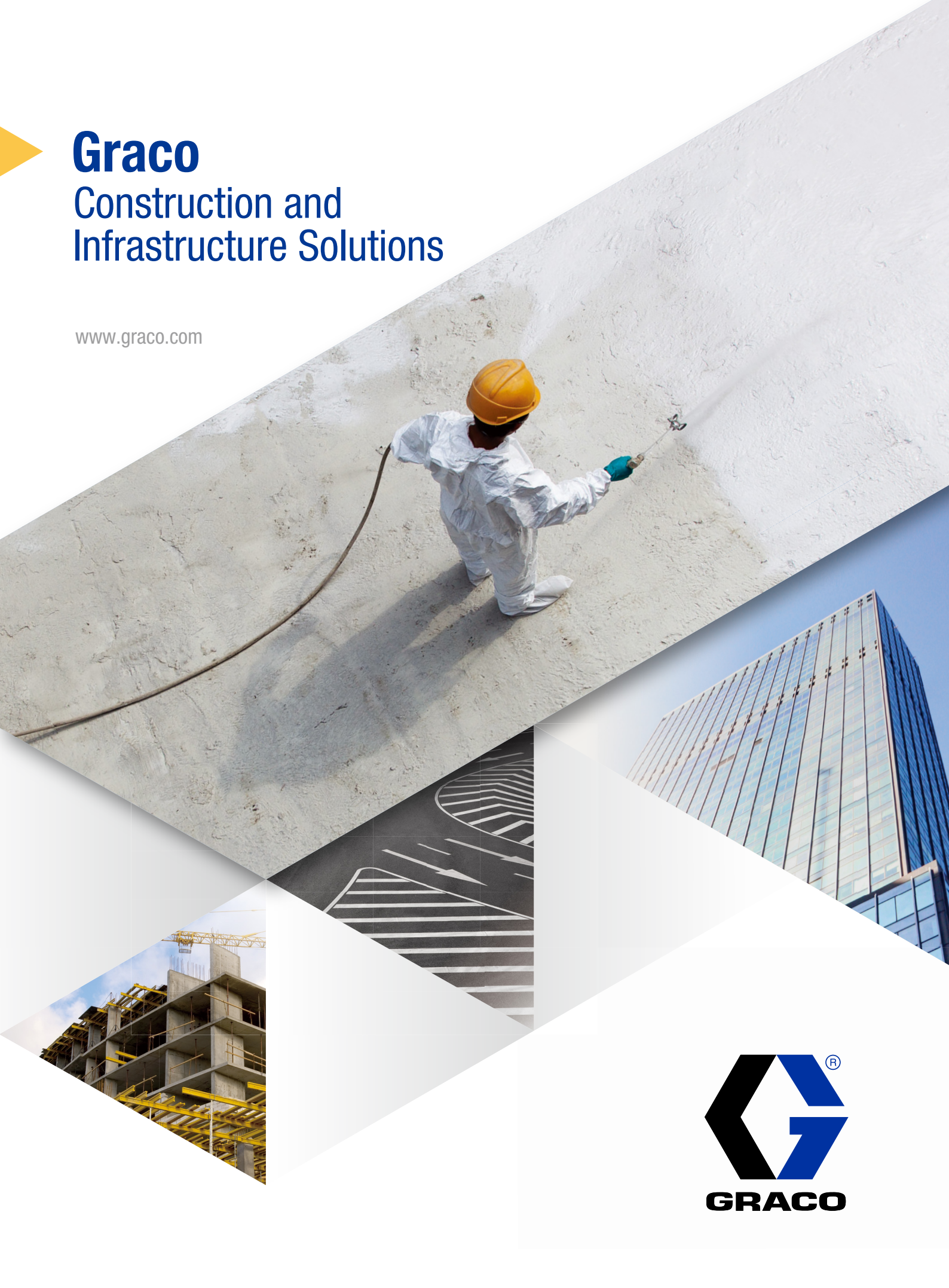


# Graco

## Construction and Infrastructure Solutions

[www.graco.com](http://www.graco.com)



## About Graco

Graco strives for continuous improvement and excellence. To guarantee superior quality and to meet the market's changing requirements, we prioritize the investment of human and financial resources in Research and Development. Every day, over 440 engineers perform research, product and process development. Innovative technologies and extensive field testing are a natural part of our process to develop new products. Every aspect of our production is subject to constant testing and evaluation. It's the foundation to deliver products with long service life and low cost of ownership. The insurance to help you grow your business.



## Industry trend

► The development of professional contractors



● Mechanized application drives construction industry upgrade! ●

► Advantage of Mechanized Applications



### Labor cost saving

Reduce labor cost up to **70%**  
get more profit on projects



### Rapid construction

Shorten project  
construction cycle



### Material cost savings

Reduce material cost up to **20%**  
and more consistent performance



### Optimize the management of workers

Fewer workers are taking on  
more construction projects



### Provide high quality wall construction



### Easy to use and operate

### Bridge

- Surface Preparation
- Protective Coating
- Waterproofing

### Oil Tank

- Surface Preparation
- Protective Coating

### Shipyards

- Surface Preparation
- Protective Coating

### Port Machinery

- Surface Preparation
- Protective Coating

### Windpower

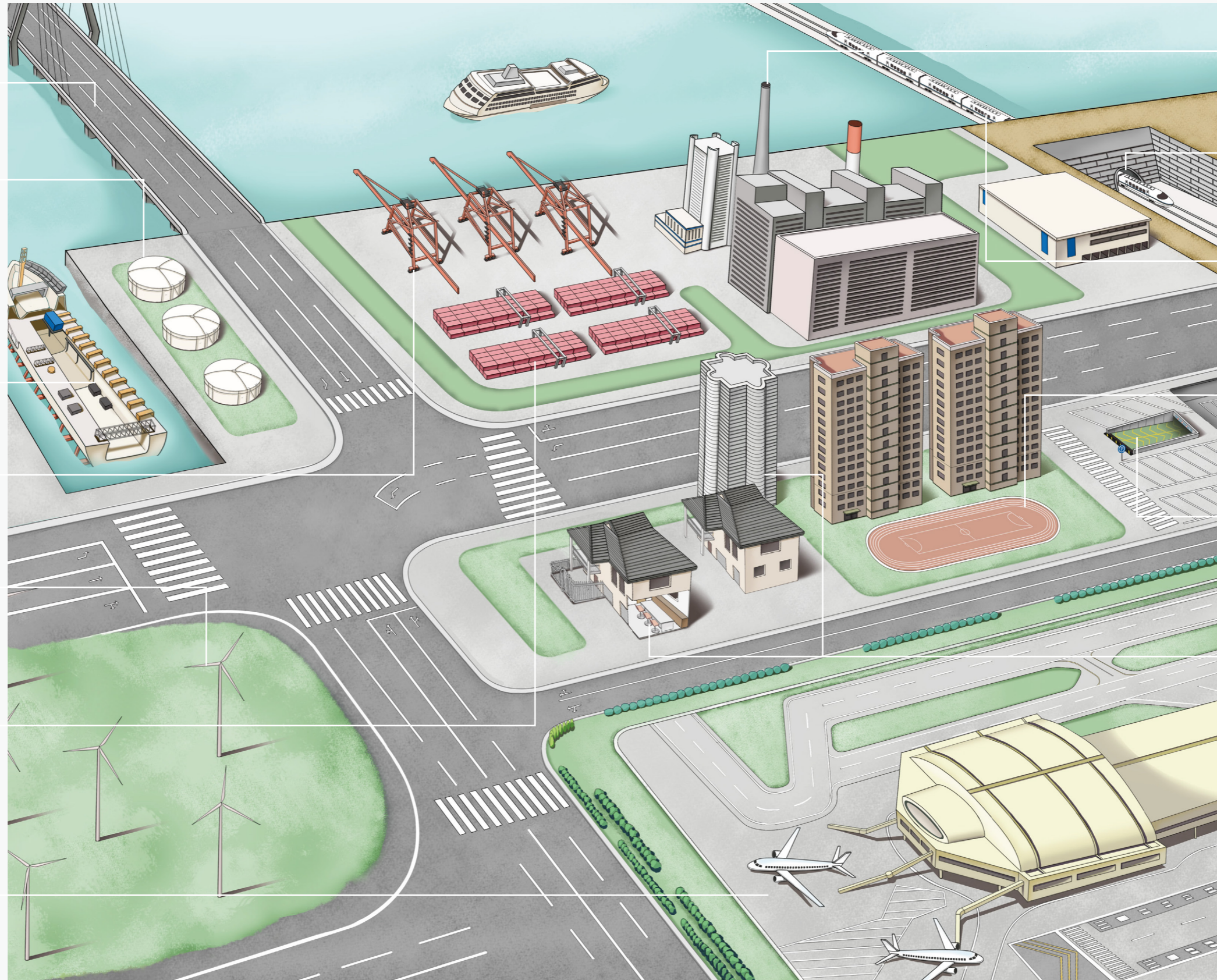
- Surface Preparation
- Protective Coating

### Container

- Surface Preparation
- Protective Coating

### Highway | City Road | Airports

- Line Removal
- Road Marking
- Waterproofing



### Factory

- Surface Preparation
- Protective Coating
- Waterproofing
- Fireproofing

### Tunnel

- Surface Preparation
- Waterproofing

### Railway

- Surface Preparation
- Foam & Polyurea
- Protective Coating
- Waterproofing

### Playgrounds

- Road marking

### Parking Lots

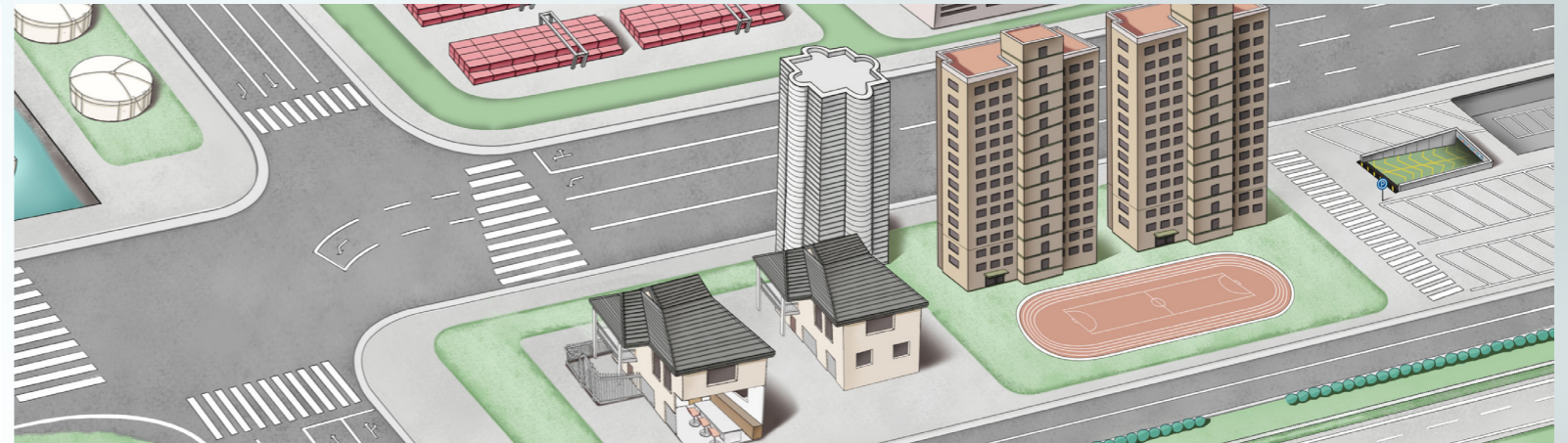
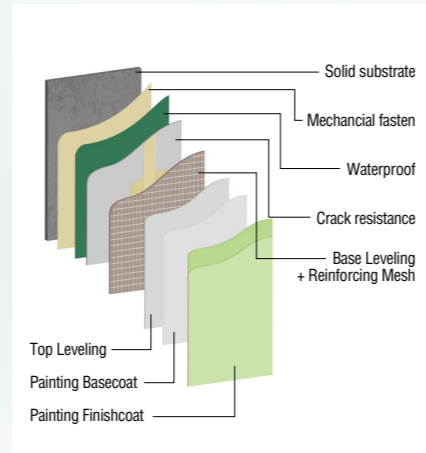
- Line Removal
- Road Marking

### Residential | Commercial

- Paint
- Putty
- Texture
- Stone Paint
- Waterproofing
- Surface Preparation
- Flooring
- Fireproofing
- Thermal Insulation
- Self Levelling
- Plastering & Decorative Mortar
- Wood
- Grouting
- Fireproofing

# Residential | Commercial Interior Coating

Architectural Coatings, Walls And Ceilings,  
Stairs, Garage Doors, Diy Remodeling and Repainting

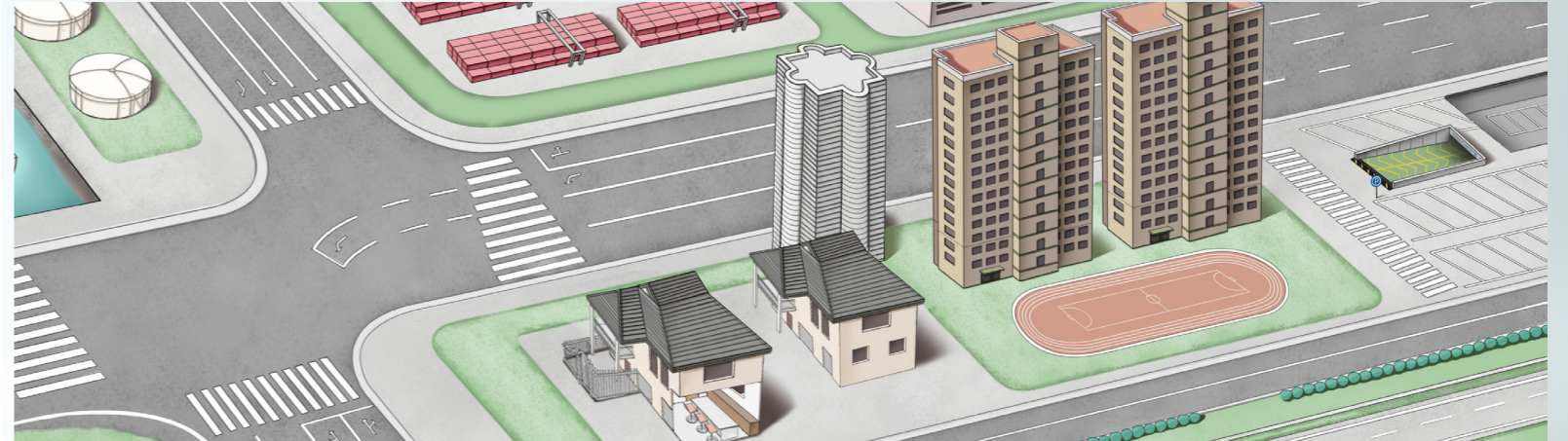
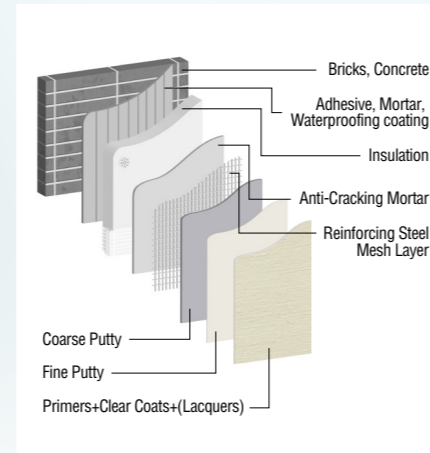


Airless Handheld	Ultra Max II 495 PC Pro	Ultra Max II 1095	Mark IV	T-Max 657	FinishPro HVLP
Paint	Paint	Paint	Paint / Putty	Putty	Paint
 <p><b>Ultra®</b></p> <p>Ultra airless handheld sprayers are designed specifically for small interior, exterior and specialty projects. The true advantages of the Ultra handheld sprayers are the Perfect Airless Finish, ultimate portability on the job, and that it is ready to spray in seconds.</p> <ul style="list-style-type: none"> <li>▶ Fastest way to finish small jobs. Painting contractors can easily spray small jobs without having to start-up their larger airless sprayer.</li> <li>▶ No thinning, same technique and speed as traditional</li> <li>▶ Perfect Airless Finish™ – smooth &amp; even at any speed</li> <li>▶ Reliability delivered – every job, every time. All new easy-to-clean design!</li> </ul>	 <p><b>Ultra®</b></p> <p>Ultra Max II 495 PC Pro features the leading technology and performance of Graco's larger Ultra Max II models. The Ultra Max II 495 PC Pro is the sprayer of choice for professionals who need a higher output sprayer for daily use on residential jobs.</p> <ul style="list-style-type: none"> <li>▶ Proven Endurance™ Pump for exceptional pump life with QuikAccess™ intake valve to easily clean or clear debris.</li> <li>▶ SmartControl™ 2.5 advanced microprocessor control delivers a consistent spray fan at all spraying pressures.</li> <li>▶ Exclusive Brushless DC Motor delivers higher horsepower per wall amp</li> <li>▶ Easy Out™ Pump Filter - reduces tip clogs and ensures quality finish.</li> </ul>	 <p><b>Ultra®</b></p> <p>With a 2.4 hp brushless DC motor and the ability to spray up to 1.2 gallons per minute, the Ultra Max II 1095 is the industry standard for the large residential and commercial contractor who sprays a wide variety of coatings.</p> <ul style="list-style-type: none"> <li>▶ MaxPower Brushless DC Motor – Never change brushes with this maintenance-free, totally enclosed motor.</li> <li>▶ SmartControl 3.0 Pressure Control – Delivers consistent spray fan without pressure fluctuations at all spraying pressures, and includes ProGuard technology.</li> <li>▶ Endurance Pump – Amazingly durable and easy-to-service design means less downtime on the job.</li> <li>▶ Heavy-Duty Prime Valve – Maintenance-free design withstands high pressure dumping.</li> </ul>	 <p><b>TexSpray Mark™</b></p> <p>The electric-powered Mark IV sprayer is designed to save time and money by enabling you to spray more square footage in a day, this unit offers valuable, must-have features for the serious professional contractor.</p> <ul style="list-style-type: none"> <li>▶ Spray skim coat, drywall mud, splatter or knockdown finish or even wide range of primers, putty and paint</li> <li>▶ MaxPower Brushless DC Motor</li> <li>▶ SmartControl 3.0 Pressure Control</li> <li>▶ Endurance Pump with Max Flo+</li> <li>▶ Rugged Cart Design</li> </ul>	 <p><b>T-Max™</b></p> <p>If you're looking for versatility, the T-Max will be your choice. Setting it in airless mode allows you to apply thin finish coats with a max pressure of 65 bar, or you can spray renders with an aggregate size up to 1 mm by hooking up a compressor to your sprayer.</p> <ul style="list-style-type: none"> <li>▶ Up to 30% savings possible compared to manual work</li> <li>▶ Applies almost all plasters without a compressor</li> <li>▶ Spray decorative materials using an external compressor</li> </ul>	 <p><b>FinishPro™</b></p> <p>Graco's FinishPro HVLP sprayers incorporate the newest technology allowing contractors and woodworkers to achieve the highest quality finish available in the industry.</p> <ul style="list-style-type: none"> <li>▶ FinishPro HVLP sprayers are now available in Standard, ProContractor and ProComp models matching the features and performance to what each contractor needs across a range of projects like furniture, cabinets, door frames, and railings.</li> <li>▶ The new EDGE II guns allow spraying at any angle while the adjustable Turbo Control reduces heat and allows you to match fan speed to what you require for the optimal finish.</li> <li>▶ Steel "Tough Box" Design, rugged, all steel enclosure protects the turbine on the job and during transport.</li> </ul>

# Residential | Commercial

## Exterior Wall Coating

Architectural Coatings, Walls And Ceilings,  
Stairs, Garage Doors, Diy Remodeling and Repainting



### APX 8200

Putty



#### APX™

All-in-One Plaster Sprayers, dedicated for plaster wall smoothing and finishing, for the true professional.

- ▶ Its compact, all-in-one design includes the hopper. Plug in, fill the hopper and you're ready to go!
- ▶ A better, more consistent spray fan in large tip sizes, offering more flow and less time knifing down material.
- ▶ Stop losing time mixing or thinning your plaster before spraying. No more issues with cavitation and losing prime due to heavy materials.

### HTX 2030

Putty



#### HTX™

Capable of applying exterior smooth and aggregate textures, elastomerics, and acrylic materials, it can also spray drywall mud in an orange peel, splatter or knockdown finish. Combine this with the available MaxLife Endurance High Pressure Pump and you can spray a wide variety of interior and exterior smooth materials including primers and paints.

- ▶ High-Output Texture Pump
- ▶ Exclusive PowerFlo Control System
- ▶ Exclusive StraightThru Fluid Path
- ▶ Wide Variety of Applicator

### Mark V

Primer / Paint



#### TexSpray Mark™

The Graco TexSpray Mark V is built to deliver a higher flow rate that lets you get the job done faster.

- ▶ 20% more productivity than the Mark IV and comes with an upgraded Heavy-Duty Texture Gun.
- ▶ It can accommodate a larger tip size, and has the power to spray skim coat in a Level 5 finish, drywall mud in an orange peel, splatter or knockdown finish or even the wide range of primers and paint.
- ▶ Standard, ProContractor and IronMan Series can offer different reliability and productivity

### RTX 5500PX

Texture



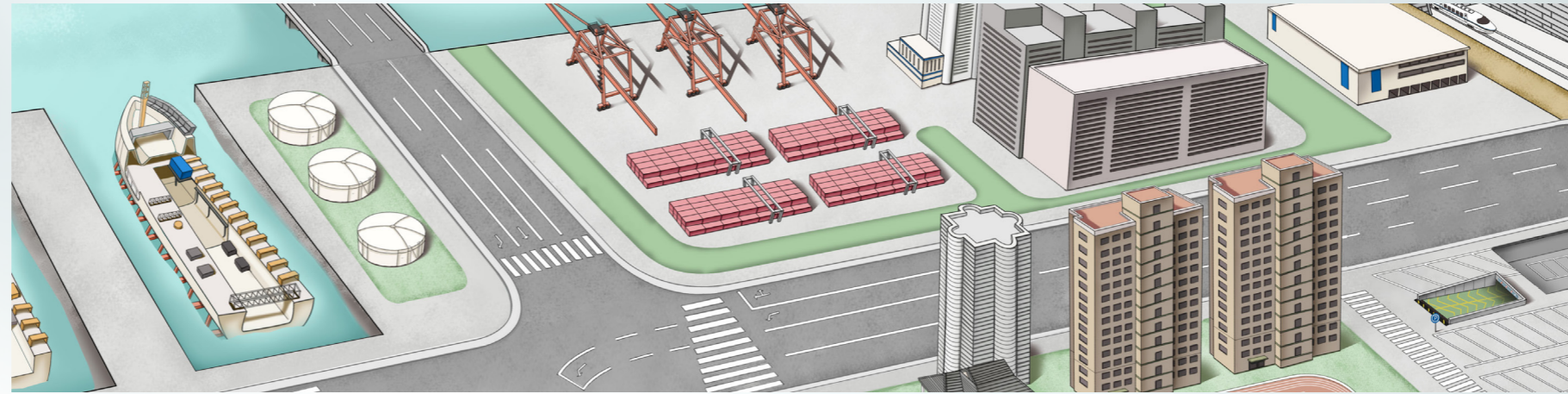
#### TexSpray RTX™

The RTX 5500 Pro Exterior Series is configured to tackle exterior jobs of all sizes. Ideal for the large residential and commercial contractor needing a compact yet powerful texture sprayer capable of handling a wide variety of Materials.

- ▶ SmartStart System
- ▶ Twin-Cylinder Air Compressor
- ▶ External Air Input
- ▶ WideTex with Hardened Tips & Adapter
- ▶ Heavy-Duty Aluminum Trigger Gun
- ▶ with Integrated Prime Selector

## Surface Preparation

Removing industrial coatings for inspections, Preparing surfaces for coating, Cleaning storage tanks, Removing rust and mill scale, Removing roadway markings, Building and site maintenance, Offshore corrosion control, Exposing welds



### EQs

Coat, Rust Removing



#### EcoQuip™

Graco's EcoQuip 2 EQs vapor blasting equipment is a standalone unit designed to tackle most typical blasting projects. The EQs is built according to tough standards and can be stacked safely in a warehouse.

- ▶ Fits inside a six-foot truck bed for easy transport
- ▶ Stacks easily to save space
- ▶ Max blast pressure of 175 PSI
- ▶ Handles both low and high air flow/pressure applications
- ▶ Painted crash frame
- ▶ 6.5 cubic ft. specialty coated pot

### GrindLazer Standard RC71 E

Small Area



#### Grindlazer™

RC71 E is a great choice for those small surface preparation jobs that demand a rotary-style cutter. Make quick work of paint removal on all surfaces with this 7 inch diameter rotary scarifer.

- ▶ Steel and High Impact Plastic Construction
- ▶ Makita Motor and Drive
- ▶ Vacuum Port for Dust Removal
- ▶ Sealed Bearings

### G-Force II

Pressure Washers



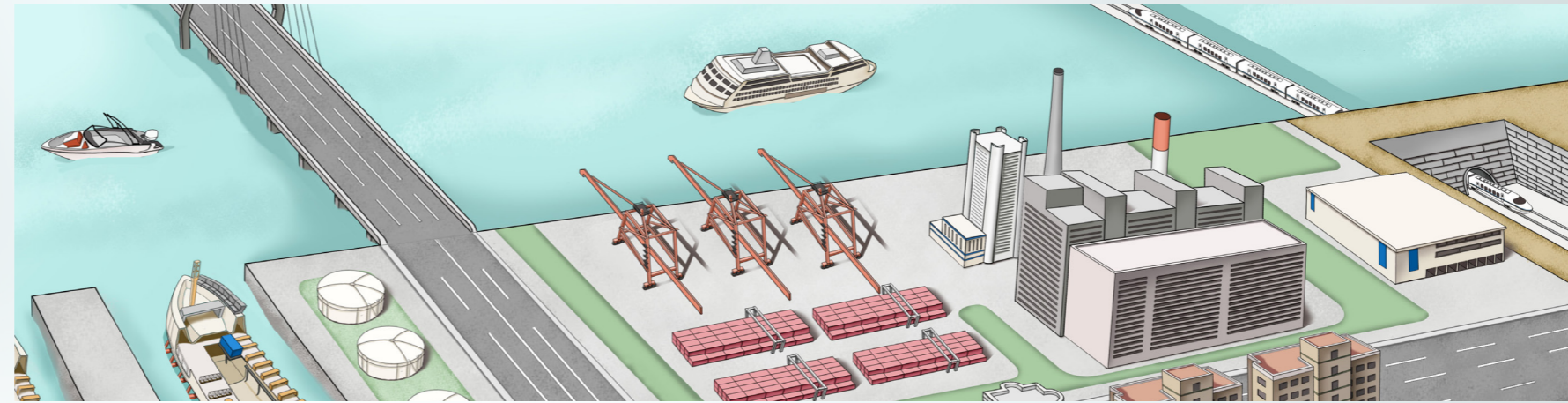
#### G-Force™

Graco pressure washers deliver on all counts. Whether you're a contractor focused on small residential or a large contractor tackling the biggest projects every day, Graco offers you the best pressure washer equipment to meet your needs.

- ▶ Heavy-Gauge Aluminum Frame. Compact, durable and lightweight for easy loading and maneuverability
- ▶ Honda Engine. GX series industrial-grade engine delivers trouble-free performance
- ▶ Direct Drive Pump. High-performance, compact Triplex Plunger pump mounted directly to the engine
- ▶ External Variable Pressure Unloader, adjust pressure to match the application
- ▶ EZ Start Pressure Relief. Eliminates back pressure for easy engine starting

# Waterproofing

Cementitious Waterproofing, PU (1K, 2K), Acrylic, Capillary Crystalline, Silicone, Polyurea

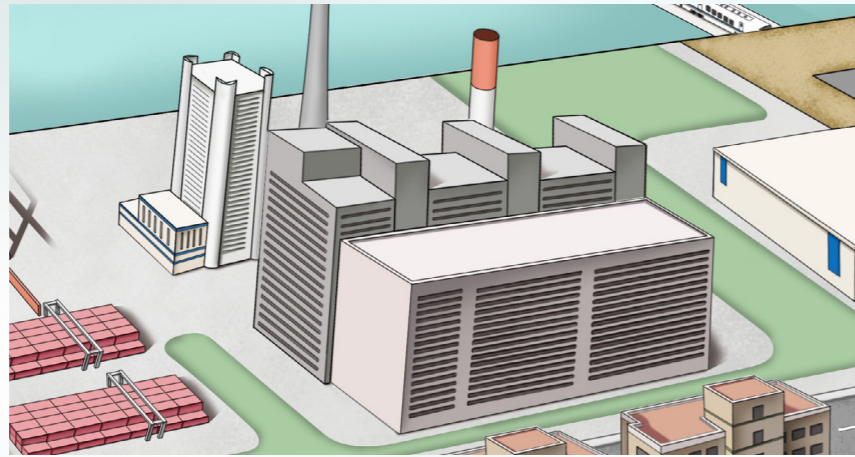


Z45/ Z25	H-XP3	FastFinish
JS, PU, Acrylic	Polyurea	Cementitious
 <p><b>Xtreme™</b> Electric sprayer, special designed for waterproofing application.</p> <ul style="list-style-type: none"> <li>▶ Improve surface quality, get better job efficiency. A smart alternative to manually applying waterproofing materials with rollers.</li> <li>▶ Produce a smooth, consistent, evenly distributed spray pattern</li> <li>▶ Results in less cracking, bubbling and rework.</li> </ul>	 <p><b>Reactor 2™</b> Graco's line of hydraulic Reactors brings increased yield and high output spraying. Ideal for in-plant OEM's or applicators that spray at high volumes.</p> <ul style="list-style-type: none"> <li>▶ Dependability – robust, durable, longest life spray system</li> <li>▶ Reduce downtime – allows for longer time in between required maintenance</li> <li>▶ Increase daily productivity – capable of extremely high duty cycle</li> </ul>	 <p><b>FastFinish™</b> TexSpray FastFinish System is engineered to deliver exceptional texture finishes 6X FASTER than traditional gravity-feed hoppers so you can finish fast with less fatigue.</p> <ul style="list-style-type: none"> <li>▶ Small and portable</li> <li>▶ Maximize material and air flow with a high-output, continuous flow air compressor and pressurized spray gun</li> <li>▶ How it works. 1. Air enters gun; 2. Adjustable Flow Control sends air to hopper; 3. Air pushes down on material; 4. Pressurized material and air mix, creating a texture finish</li> </ul>

RTX 1400	DutyMax GH 675 DI
Cementitious	PU, Silicone
 <p><b>TexSpray RTX™</b> The RTX Standard Interior Series is the everyday finishing solution designed for the residential and repair contractor looking for everyday reliability</p> <ul style="list-style-type: none"> <li>▶ RotoFlex™ II Pump</li> <li>▶ High-Output 6.1 cfm Air Compressor</li> <li>▶ FlexChange™ Pump Section</li> <li>▶ Adjustable Material Flow Control WideTex with Hardened Tips &amp; Adapter</li> </ul>	 <p><b>DutyMax GH™</b> DutyMax 675DI can handle hard-to-spray materials such as silicone and other waterproofing and protective coating materials with the convenience of a small gas/electric powered sprayer</p> <ul style="list-style-type: none"> <li>▶ Maximum pressure of 6750 psi and flow rates up to 1.5 gpm</li> <li>▶ Cleanup is simple and economical</li> <li>▶ Spraying delivers more consistent mil</li> <li>▶ Converts to 3300 psi/3 gpm pump with optional kit</li> <li>▶ Removable engine for ultimate versatility when moving</li> <li>▶ Work Smarter and Faster with great accessories</li> </ul>

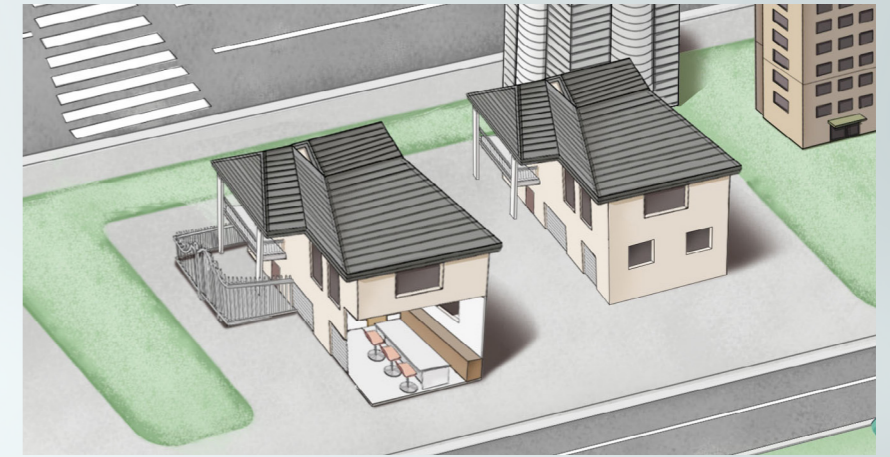
## Fireproofing

Intumescent,  
Cementitious fireproofing



## Flooring

Flooring Paint,  
Self-leveling, PU, Epoxy



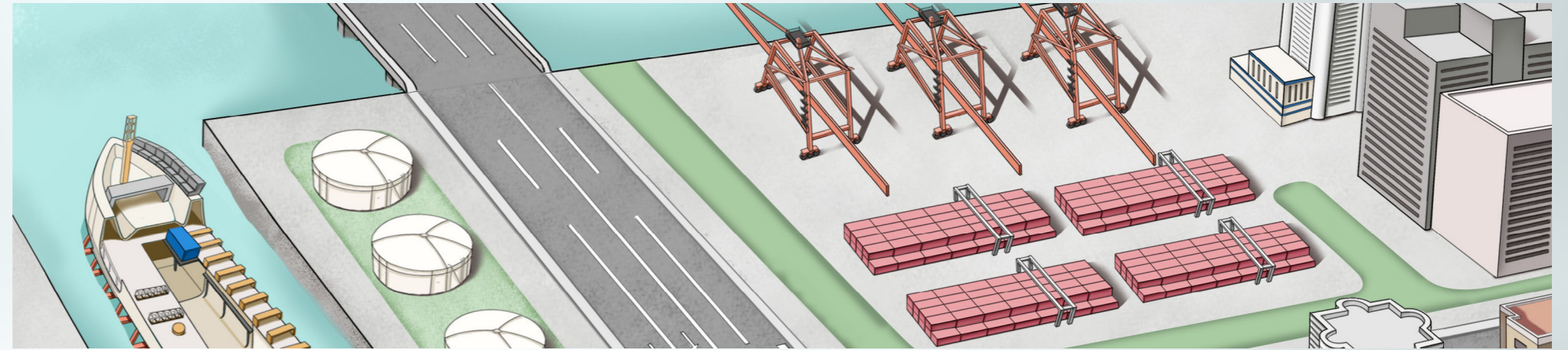
F340e	F680
Cementitious Fireproofing	Cementitious Fireproofing
	
<p><b>ToughTek™</b> Powerful and portable fireproofing pump</p> <ul style="list-style-type: none"> <li>▶ Piston pump technology easily handles fireproofing materials</li> <li>▶ Gets projects done faster with high-pressure performance</li> <li>▶ Electric operation – plugs into a standard 120V, 15A wall outlet</li> <li>▶ Long lasting wear parts for more uptime, less downtime</li> <li>▶ Easy to use, simple to maintain</li> <li>▶ Ideal for fireproofing over structural steel or spray foam insulation</li> </ul>	<p><b>ToughTek™</b> A powerful sprayer for any size job</p> <ul style="list-style-type: none"> <li>▶ Piston pump technology easily handles gypsum-based and cementitious SFRMs</li> <li>▶ Gets projects done faster with high-pressure performance</li> <li>▶ Electric operation – 230V single phase power, 30 amps</li> <li>▶ Long lasting wear parts for more uptime, less downtime</li> <li>▶ Easy to use, simple to maintain</li> <li>▶ Ideal for fireproofing over structural steel or spray foam insulation</li> <li>▶ Pivoting pump lower for easy maintenance</li> </ul>

MP20	MP40	GMAX II 7900
Self-Levelling	Self-Levelling	Epoxy & PU Coating
		
<p><b>ToughTek™</b> With its ability to mix and pump, this all-in-one compact machine is the ideal solution for contractors looking to make the switch from manually applying self-leveling underlayment. The MP20 can deliver up to 100 bags per hour allowing contractors to get jobs done faster.</p> <ul style="list-style-type: none"> <li>▶ Compact, easy to maneuver</li> <li>▶ Easy to operate with variable speed control</li> <li>▶ 300 psi (21 bar) pumping pressure</li> <li>▶ Material Output: 100 bags/hr Self-leveling Underlayment</li> </ul>	<p><b>ToughTek™</b> Although identical in size and function as the MP20, the MP40 has double the output and can pump up to 200 bags per hour of selfleveling underlayment. The larger motor and pump make the MP40 an excellent fit for contractors looking for a high production solution.</p> <ul style="list-style-type: none"> <li>▶ Compact, easy to maneuver</li> <li>▶ Easy to operate with variable speed control</li> <li>▶ 300 psi (21 bar) pumping pressure</li> <li>▶ Material Output: 200 bags/hr Self-leveling Underlayment</li> </ul>	<p><b>GMAX™</b> With a 200 cc Honda engine and the ability to spray up to 2.2 gallons per minute, the GMAX 7900 is Graco's largest gas mechanical sprayer.</p> <ul style="list-style-type: none"> <li>▶ Advantage Drive System, runs quiet and has a lifetime guarantee.</li> <li>▶ SmartControl 3.0 Pressure Control delivers consistent spray fan without pressure fluctuations at all spraying pressures.</li> <li>▶ MaxLife Extreme-Duty Pump keeps you working by running 6X longer between repacks.</li> <li>▶ Honda Engine delivers maximum performance and contractor preferred reliability.</li> </ul>



# Protective Coating

Xtreme 1K Applications  
 Ship building & marine, Bridge protective coating,  
 Railcar manufacturing & repair, Pipe & tank coating,  
 Water tower , protective coating, Factories



## King

1K Protective Coating



### Xtreme™

Superior sprayers for high-volume protective coatings

- ▶ Simple maintenance
- ▶ Improved icing performance
- ▶ Less pulsation
- ▶ Improved sealing and strength
- ▶ Multi gun capabilities

## e-Xtreme

1K Protective Coating



### Xtreme™

The first electric sprayer for protective coatings approved for hazardous locations

- ▶ Plug-in and spray electrical power - no compressors needed
- ▶ No air motor means no icing
- ▶ Quiet operation for when sound is an issue
- ▶ Hazardous location approved - the first of its kind
- ▶ Plenty of power for all sorts of applications
- ▶ Available 3-year extended warranty

## XM

2K Protective Coating



### Xtreme™

Graco XM Plural-Component Sprayers are designed to spray the toughest plural-component materials, with the assurance that you're spraying accurately and on-ratio.

- ▶ New dosing technology assures accurate, on-ratio mixing for better yield and less waste
- ▶ Advanced, intuitive user controls provide real-time display of ratio
- ▶ USB port lets you easily access and download historical spraying data
- ▶ Supports multiple spray guns for added productivity
- ▶ Allows for easy crane transport with eye hooks on air motors
- ▶ Variable ratio system - handles material ratios from 1:1 to 10:1

## XP

2K Protective Coating



### Xtreme™

Two-component spraying made easy and affordable

- ▶ Reduced material waste
- ▶ No more throwing away unused mixed material at the end of the day
- ▶ Save money by using less clean-up solvent
- ▶ Consistent material quality - no more guesswork or human error in measuring materials
- ▶ Easy to operate - minimal training required
- ▶ Reduced maintenance costs
- ▶ Rated for 7250 psi (500 bar, 50 MPa) to handle viscous materials and long hose lengths

## Road Marking | Line Removal

Roads, Bike Paths, Parking lots, Airports, Intersections, Removal of markings, Playgrounds and sports fields



ThermoLazer 200TC	ES1000	LineLazer V 200HS	LineLazer V 250DC	RoadPak HD	GrandLazer Pro RC813 G
City Road	Parkinglot	City Road	Highway	Parkinglot	Line Removal
 <p><b>ThermoLazer™</b> The smaller, more portable ThermoLazer 200tc (200 lb) is ideal for striping contractors who already have premelt kettle systems.</p> <ul style="list-style-type: none"> <li>▶ FlexDie® delivers excellent line quality with exclusive deep-die</li> <li>▶ Direct Heat System delivers maximum heat, resulting in maximum material flow</li> <li>▶ Tri-Wheel System, dual solid front and single solid rear wheels provide smooth, quiet operation</li> </ul>	 <p><b>LineLazer™</b> ES 1000 is the industry's first electric powered striping solution ideal for indoor striping or where noise is a concern.</p> <ul style="list-style-type: none"> <li>▶ No Engine Noise, vibration and fumes</li> <li>▶ Deep Cycle Battery and on-board charger</li> <li>▶ Advanced pressure control system</li> <li>▶ Exclusive Endurance Pump and New ProConnect System</li> </ul>	 <p><b>LineLazer™</b> The LineLazer V 200 hs is the high performance hydraulic striper you'll want for your most demanding jobs</p> <ul style="list-style-type: none"> <li>▶ New Automatic, Semi-Automatic Guns</li> <li>▶ New Auto-Layout II</li> <li>▶ New Data Logging with J-Log System</li> <li>▶ Pressurized Bead System</li> </ul>	 <p><b>LineLazer™</b> Spray two colors simultaneously with Graco's new LineLazer V 250 dc. Ideally suited for airports, municipalities</p> <ul style="list-style-type: none"> <li>▶ Dual Graco Hydraulic Motors</li> <li>▶ Dual Endurance Displacement Pumps</li> <li>▶ Exclusive Stand-On Platform</li> <li>▶ Use up to six guns to create straighter long lines</li> <li>▶ Honda 13 HP GX Engine with electric start</li> </ul>	 <p><b>RoadLazer™</b> Graco took the RoadPak to a whole new level with the RoadPak HD. With double the output and the ability to stripe with 5 or more guns, this is a high-productivity striping machine.</p> <ul style="list-style-type: none"> <li>▶ New Higher Output Kohler® Engine</li> <li>▶ New High-Capacity Hydraulic Reservoir</li> <li>▶ New Advanced Controller</li> <li>▶ New RoadPak HD Gun Bar with 5+ Gun capacity</li> </ul>	 <p><b>GrandLazer™</b> The GrindLazer Pro RC813 G is the ideal choice for when you need to remove lines without grooves.</p> <ul style="list-style-type: none"> <li>▶ Honda Power</li> <li>▶ No-Groove Line Eraser</li> <li>▶ Advanced Depth-Control System</li> <li>▶ Adjustable, Anti-Vibration Handle Bars</li> <li>▶ Dust-Free Vacuum Port</li> <li>▶ Dual Purpose Tachometer and Hour Meter</li> </ul>

**3,300+** distributors

*partners offer local service*

**100+** countries

*all over the world*

**100+** product assembly lines

**1000+** computer numerical

*control manufacturing machines*

▶ **CHINA**

Asia Pacific Headquarters  
Graco Fluid Equipment (Shanghai) Co., Ltd.  
Building 7.1029 Zhongshan Road  
South Huangpu District Shanghai 200011  
The People's Republic of China  
Tel: 86 21 649 50088  
Fax: 86 21 649 50077

▶ **JAPAN**

Graco K.K.  
1-27-12 Hayabuchi Tsuzuki-ku  
Yokohama City, Japan 2240025  
Tel: 81 45 593 7300  
Fax: 81 45 593 7301

▶ **KOREA**

Graco Korea Inc.  
38, Samsung 1-ro 1-gil, Hwaseong-si,  
Gyeonggi-do. 18449 Republic of Korea  
Tel: 82 31 8015 0961  
Fax: 82 31 613 9801

▶ **MINNESOTA**

Worldwide Headquarters  
Graco Inc.  
88-11th Avenue N.E.  
Minneapolis, MN 55413

MAILING ADDRESS  
P.O.Box 1441  
Minneapolis, MN 55440-1441  
Tel: 612-623-6000  
Fax: 612-623-6777

▶ **BELGIUM**

European Headquarters  
Graco BVBA  
Industrieterrein-Oude Bunders  
Slakweidestraat 31  
B-3630 Maasmechelen, Belgium  
Tel: 32 89 770 700  
Fax: 32 89 770 777

▶ **AUSTRALIA**

Graco Australia Pty Ltd.  
Suite 17, 2 Enterprise Drive  
Bundoora, Victoria 3083 Australia  
Tel: 61 3 9468 8500  
Fax: 61 3 9468 8599

▶ **INDIA**

Graco India Pvt Ltd.  
Plot No 295, Udyog Vihar Phase-IV  
Gurugram - 122015 (Haryana) India  
Tel: 91 124 661 0200  
Fax: 91 124 661 0201

Contact Us

**[www.graco.com](http://www.graco.com)**

for more information.



Founded in 1926, Graco is a world leader in fluid handling systems and components. Graco products move, measure, control, dispense and apply a wide range of fluids and viscous materials used in vehicle lubrication, commercial and industrial settings. The company's success is based on its unwavering commitment to technical excellence, world-class manufacturing and unparalleled customer service. Working closely with qualified distributors, Graco offers systems, products and technology that set the quality standard in a wide range of fluid handling solutions. Graco provides equipment for spray finishing, protective coating, paint circulation, lubrication, and dispensing sealants and adhesives, along with power application equipment for the contractor industry. Graco's ongoing investment in fluid management and control will continue to provide innovative solutions to a diverse global market.